



LEON
INOX

ΠΑΡΑΓΩΓΗ ΡΑΦΙΩΝ ΨΥΚΤΙΚΩΝ ΘΑΛΑΜΩΝ
COLD ROOM RACKS PRODUCTION





Leon Inox started its activity in 2008, initially as an importer and trader in the field of professional kitchen and food handling equipment.

We soon focused our activity on racks & shelving for cold-rooms. In 2010, we started our first production with state-of-the-art automated machines.

Our products stand out for their durability and aesthetics. We always design taking into account sanitary standards, functionality, and safety. In addition, we offer consistency and service at all stages of our relationship with our customers and partners.

As part of continuous improvement, we invest in new machinery, choose the best raw materials, take care of quality in the production process and the working environment, and maintain the smallest possible energy footprint.

Having set our own very strict standards, we exceed the standard requirements for health and safety as well as international HACCP guidelines.

We are confident that by working with us, you will reap greater benefits than your initial expectations.





The TITAN 2 aluminum racks are designed for a wide range of applications, such as:

- Restaurants
- Hospitals
- Refrigerators and cold rooms
- Supermarkets and mini-markets
- Meat processing labs
- Hotels
- Professional kitchens
- Food industries,
- Linen and laundry storage

Advantages:

- High durability
- Sanitary standards
- Excellent aesthetics
- Easy installation
- Lightweight construction
- Economical solution



The TITAN 2 racks feature:

- Attractive appearance with flawless surfaces that have no gaps or spots where organic matter or dirt can accumulate, thus preventing the growth of microbes.
- Smooth, rounded and durable aluminum profiles.
- Carefully designed sanitary corners at the contact points with the plastic surfaces for easy cleaning.
- Plastic grates that can be washed even in professional dishwashers.

The TITAN 2 racks are made exclusively from high-quality raw materials:

- High-purity aluminum, anodized to 20 microns.
- Primary polypropylene.
- Stainless steel screws.

TITAN 70/80



The new TITAN 70/80 racks were designed to accommodate the storage of large and heavy items.

Until its debut, the only options in the global market for shelves wider than 60 cm were of a steel type, lacking hygiene specifications.

The assembly method has been significantly enhanced compared to the TITAN 02 series. Each upright includes a retention element with 2 screws that increase its strength by a factor of 6. The connection of the vertical and horizontal elements now occurs inside the horizontal profile.

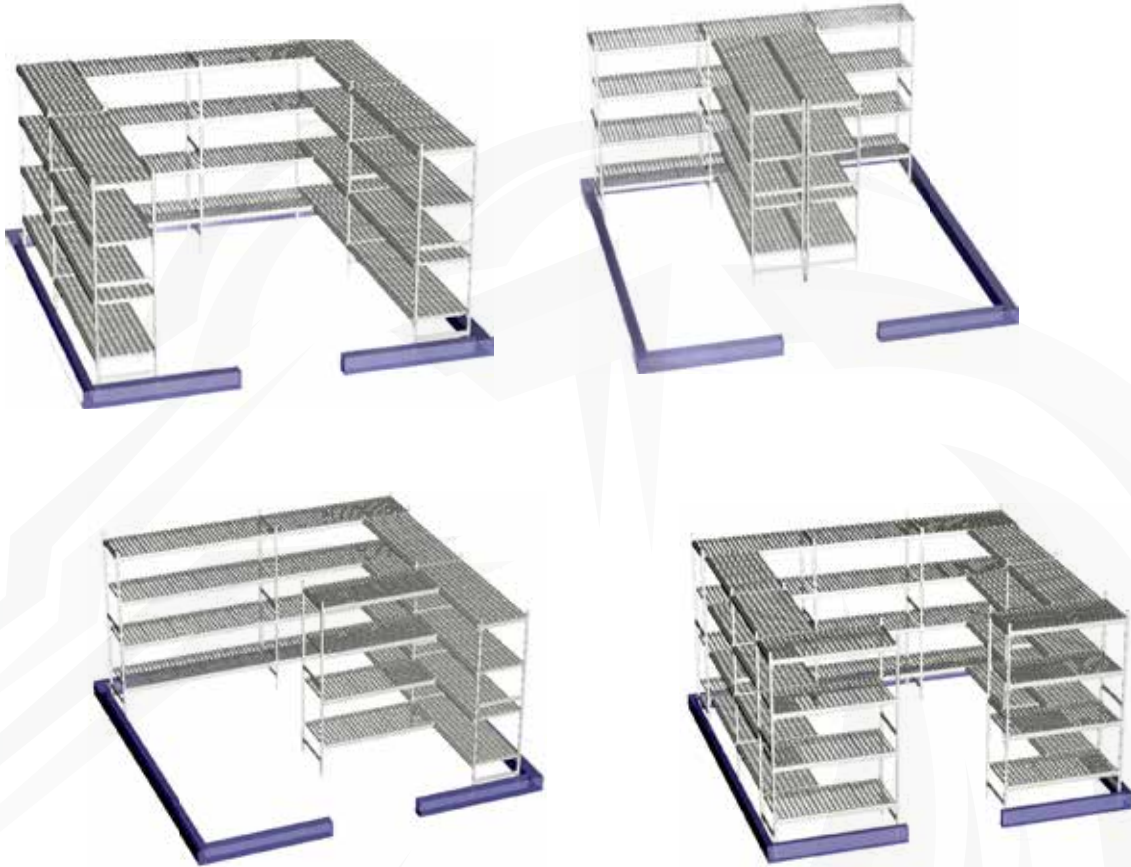
The horizontal profile has nearly doubled the height of its vertical sides and has increased the contact area with the plastic surfaces by 60%.

As a result, there is a substantial improvement in resistance to vertical loads.

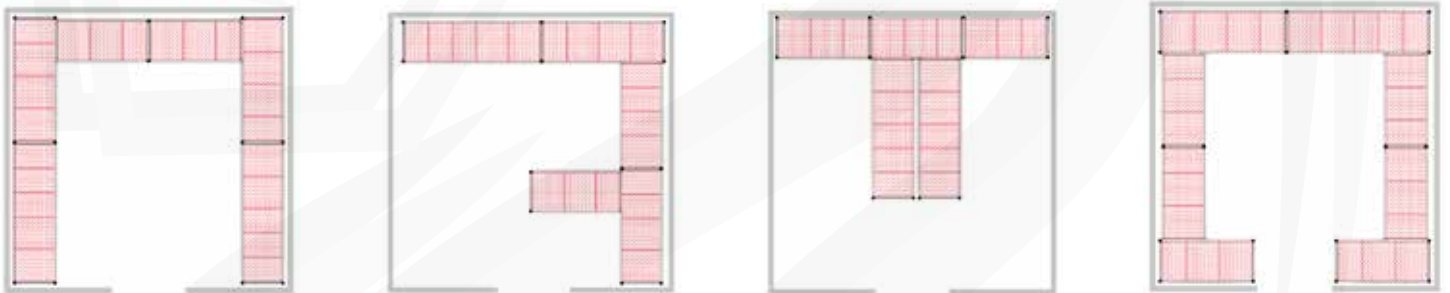
Innovations in design have also doubled the contact area of the two profiles, providing twice the mechanical resistance to torsion and bending forces.

The plastic grates (surfaces) of the TITAN 70/80 are crafted by incorporating aluminum profiles within the plastic, reinforcing its already considerable horizontal rigidity.

TITAN 70/80 stands out as one of the most durable racks in its category, setting a benchmark well above the competition.



There are many different ways
to set up shelves in a space.
Consult us!



Leon Inox is able to study and design with CAD the optimal placement of the racks in the cold rooms or storage areas, according to the requirements of the clients, **at the lowest possible cost and without any additional charge.**

some technical details...

The construction material of the metal parts (frame) is primary aluminum. All plastic parts (shelf blocks, connection elements, etc.) are made of primary polypropylene. The screws are made of stainless steel.

“Primary” means that the material doesn’t come from recycling and is used for the first time, ensuring high purity. After the end of the product’s life, it can be easily recycled since it does not need to be separated from other materials.

All materials are inert and resistant to common cleaning agents, making them perfectly suitable for use in cold rooms. They withstand temperatures from -40°C to +60°C and high levels of moisture.

Aluminum profiles are anodized to a thickness of 20 microns. Aluminum is naturally durable and anodizing makes it even stronger by creating a protective layer on the surface against oxidation and corrosion.

All internal corners are curved (radii designed) for easy cleaning.
All shelf blocks can be washed in a professional dishwasher (they fit inside most models).

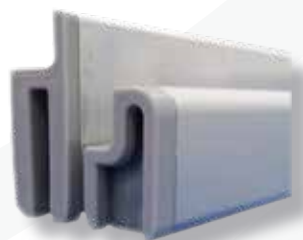
The frames (uprights) are prepared with positions for shelves every 15cm.
The 173cm high frame has 11 positions, the 203cm has 13 positions and the 233cm has 15 positions.

Each frame has a small side length of 30 mm.
The feet have a leveling margin of about 2,7 cm.

No tools are required for installation.



TITAN 70/80
(lines 700-800)



TITAN 2
(lines 300-600)

Beams / Bars

Maximum permissible load *		
Net Length (mm)	Simple shelf (lines 300-600)	Reinforced shelf (lines 700 & 800)
708	250 Kg	375 Kg
798	200 Kg	300 Kg
886	170 Kg	255 Kg
974	160 Kg	240 Kg
1062	140 Kg	210 Kg
1152	130 Kg	195 Kg
1240	120 Kg	180 Kg
1330	100 Kg	150 Kg
1505	90 Kg	135 Kg

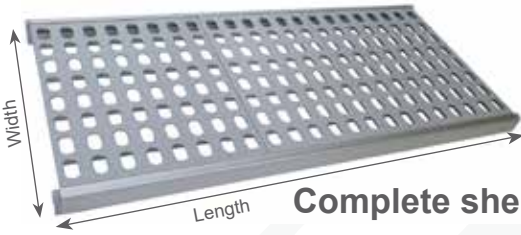


Always distribute the load evenly across the entire shelf surface area.



*calculated on uniformly distributed load on frames; not corner joints

Maximum vertical load per frame - 1000Kg



Complete shelf set, including plastic blocks and beams (bars).

Line 300
Width 302 mm

Net Length (mm)	Code
708	022*0708*300
798	022*0798*300
886	022*0886*300
974	022*0974*300
1062	022*1062*300
1152	022*1152*300
1240	022*1240*300
1330	022*1330*300
1505	022*1505*300

Line 400
Width 384 mm

Net Length (mm)	Code
708	022*0708*400
798	022*0798*400
886	022*0886*400
974	022*0974*400
1062	022*1062*400
1152	022*1152*400
1240	022*1240*400
1330	022*1330*400
1505	022*1505*400

Line 500
Width 475 mm

Net Length (mm)	Code
708	022*0708*500
798	022*0798*500
886	022*0886*500
974	022*0974*500
1062	022*1062*500
1152	022*1152*500
1240	022*1240*500
1330	022*1330*500
1505	022*1505*500

Line 600
Width 580 mm

Net Length (mm)	Code
708	022*0708*600
798	022*0798*600
886	022*0886*600
974	022*0974*600
1062	022*1062*600
1152	022*1152*600
1240	022*1240*600
1330	022*1330*600
1505	022*1505*600

***Line 700**
Width 710 mm

Net Length (mm)	Code
708	022*0708*700
798	022*0798*700
886	022*0886*700
974	022*0974*700
1062	022*1062*700
1152	022*1152*700
1240	022*1240*700
1330	022*1330*700
1505	022*1505*700

* reinforced

***Line 800**
Width 810 mm

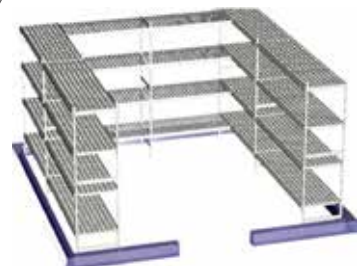
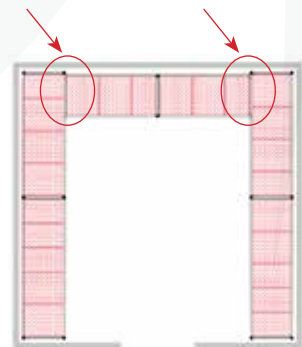
Net Length (mm)	Code
708	022*0708*800
798	022*0798*800
886	022*0886*800
974	022*0974*800
1062	022*1062*800
1152	022*1152*800
1240	022*1240*800
1330	022*1330*800
1505	022*1505*800

* reinforced



Corner Joint

Net Width (mm)	Code
302	022*0030*300
384	022*0040*400
475	022*0050*500
580	022*0060*600
710	022*0070*700
810	022*0080*800

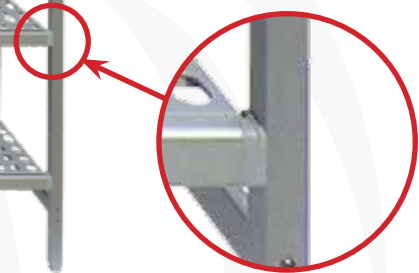
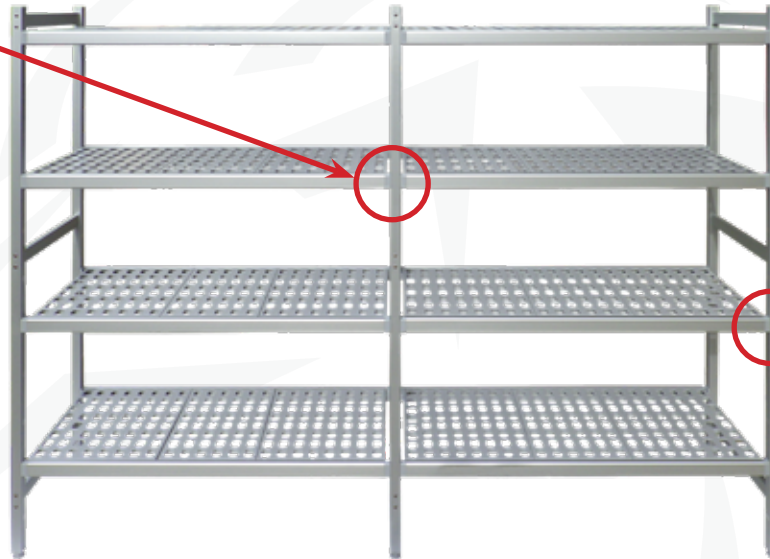


Corner joints are used to connect one line of shelves vertically on another without intermediate frames (uprights), ensuring they don't get in the way.

We need one corner joint per shelf level.



The **double-punched** frame is perforated on both sides and fits between the shelves.



The **single-punched** frame is for the end of each line and is perforated on one side only.

Side frames (uprights)



Height 173cm Single		
Net Width (mm)		Code
302		022*1701*300
384		022*1701*400
475		022*1701*500
580		022*1701*600
710		022*1701*700
810		022*1701*800

Height 203cm Single		
Net Width (mm)		Code
302		022*2001*300
384		022*2001*400
475		022*2001*500
580		022*2001*600
710		022*2001*700
810		022*2001*800

Height 233cm Single		
Net Width (mm)		Code
302		022*2301*300
384		022*2301*400
475		022*2301*500
580		022*2301*600
710		022*2301*700
810		022*2301*800

Height 173cm Double		
Net Width (mm)		Code
302		022*1702*300
384		022*1702*400
475		022*1702*500
580		022*1702*600
710		022*1702*700
810		022*1702*800

Height 203cm Double		
Net Width (mm)		Code
302		022*2002*300
384		022*2002*400
475		022*2002*500
580		022*2002*600
710		022*2002*700
810		022*2002*800

Height 233cm Double		
Net Width (mm)		Code
302		022*2302*300
384		022*2302*400
475		022*2302*500
580		022*2302*600
710		022*2302*700
810		022*2302*800

about process...

All our orders follow this procedure:

- Acceptance of Client Inquiry: Includes dimensions and specifications.
- Registration in Order Protocol: Documenting order details.
- Preparation of Quotation: Creation of a formal proposal.
- Response via Email, Viber, WhatsApp, etc.: Includes the quotation (financial offer), drawings, 3D visualizations (where applicable), and videos (if necessary).
- Client Approval of Quotation: Confirmation of the proposal.
- Order Preparation: Processing of the order.
- Dispatch and Customer Notification: Shipping and informing the customer.

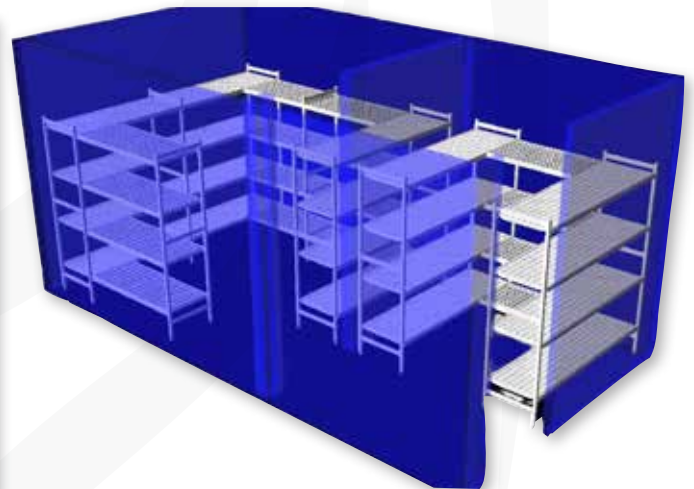
10

Each package includes:

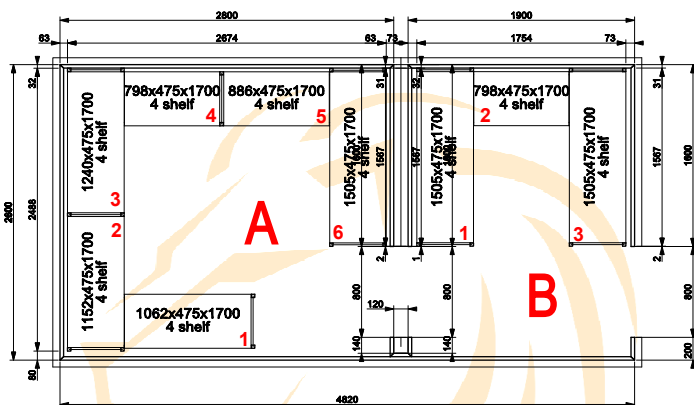
1. Plans indicating the position of each item in the assembly plan.
2. Assembly Instructions

Each package is labeled with the order code and its position number according to the plan.

 LEON INOX ΠΑΡΑΓΩΓΗ ΡΑΦΙΩΝ ΨΥΚΤΙΚΩΝ ΘΑΛΑΜΩΝ LEON INOX ΕΚΘΕΣΗ-ΕΡΓΟΣΤΑΣΙΟ ΑΡΑΧΘΟΥ 1 - 18346, ΜΟΣΧΑΤΟ ΤΗΛ 0030 699 914 7055 LEONS INOX ΜΟΝΟΠΡΟΣΩΠΗ Ι Κ Ε ΕΡΓΟΣΤΑΣΙΟ ΠΑΡΑΓΩΓΗΣ ΡΑΦΙΩΝ ΓΙΑ ΨΥΚΤΙΚΟΥΣ ΘΑΛΑΜΟΥΣ e-mail: info@leoninox.gr / sales@leoninox.gr	Πελάτης Ημερομηνία: 14/05/2024 Κωδ. Αναφοράς: Αριθμός Πρωτοκόλλου: 1266
--	--



ΠΡΟΣΦΟΡΑ



4 ΕΠΙΠΕΔΑ

Υψηλής καθαρότητας αλουμίνιο, ανοδιωμένο στα 20 μικρά.
Πρωτογενές πολυαιθυλένιο / πολυπροπυλένιο ασφαλές για τρόφιμα.
Ανοξείδωτες βίδες συναρμολόγησης.

	MADE IN GREECE sales@leoninox.gr - T: 216 400 44 03
ΔΕΣΤΙΝΕΥΣΗ:	Recipient
ΔΙΕΥΘΥΝΣΗ:	Destination
ΤΗΛΕΦΩΝΟ:	216 400 4402
ΚΑΤΑΣΤΑΣΗ:	Leon Inox
ΘΕΣΗ:	COLD ROOM «A»
ΑΡΙΘΜΟΣ ΠΑΚΕΤΩΝ:	1 / 11
ΑΡΙΘΜΟΣ ΠΑΡΕΜΒΑΣΕΩΝ:	1266



and our warranty!

20 YEARS Guarantee
against rust from water and moisture!

11



The guarantee extends to all components of the shelving system, protecting against oxidation due to water and moisture, contingent upon verification of a manufacturing defect.

However, the guarantee does not cover cases of force majeure, misuse, overloading, or exposure of the shelves to harsh chemical agents.







Partner Details

Company name: **SPIMA LTD**
VAT number: **CY 10039685D**
Tel.: **+357 22 486393**
email: **info@spima.com.cy**

The basic information we need to know

For the cold room

For the shelves (bold is the standard)

Cold room dimensions from panel to panel ____ X ____ cm

Distance **to the left** of the door ____ cm

Distance **to the right** of the door ____ cm

Height of cold room ____ cm

Dimensions and position of the internal cooling unit ____ X ____ cm

Select the height of the frame

- **173cm**
- 203cm
- 233cm

How many levels?

- 3 shelves
- **4 shelves**
- 5 shelves

Maximum load per level? ____ kg

Desired width (depth)?

- 30,2 cm (line 300)
- 38,4 cm (line 400)
- **47,5 cm** (line 500)
- 58 cm (line 600)
- 71 cm (line 700)
- 81 cm (line 800)

Cold room drawing



Cold room number:

Send to email: info@spima.com.cy

Keep in mind:

Aluminum shelves especially for cold rooms
with a width of **71cm & 81cm**,
until today **ONLY LEON INOX** manufactures worldwide!

This is the reinforced **TITAN 70/80** series.





**LEON
INOX**

SHOW ROOM / PRODUCTION FACILITY:
Arachthou 1, 18346 Moschato / Athens GREECE

Tel.: **+302164004402**, +306999147055
E-mail: **sales@leoninox.gr**
Website: **www.leoninox.gr**

