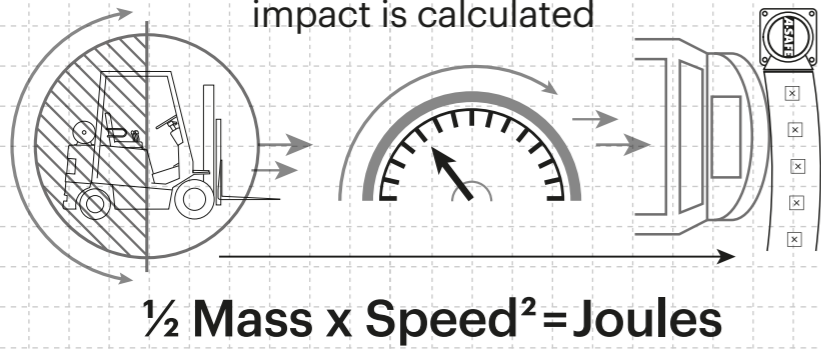


Technical Information

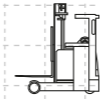
How the energy from a vehicle impact is calculated



Tested Impact Energy

15,800 Joules

Equivalent vehicle and speed



6.4 tonne

X

5 mph impact

90° Impact on StepBumper

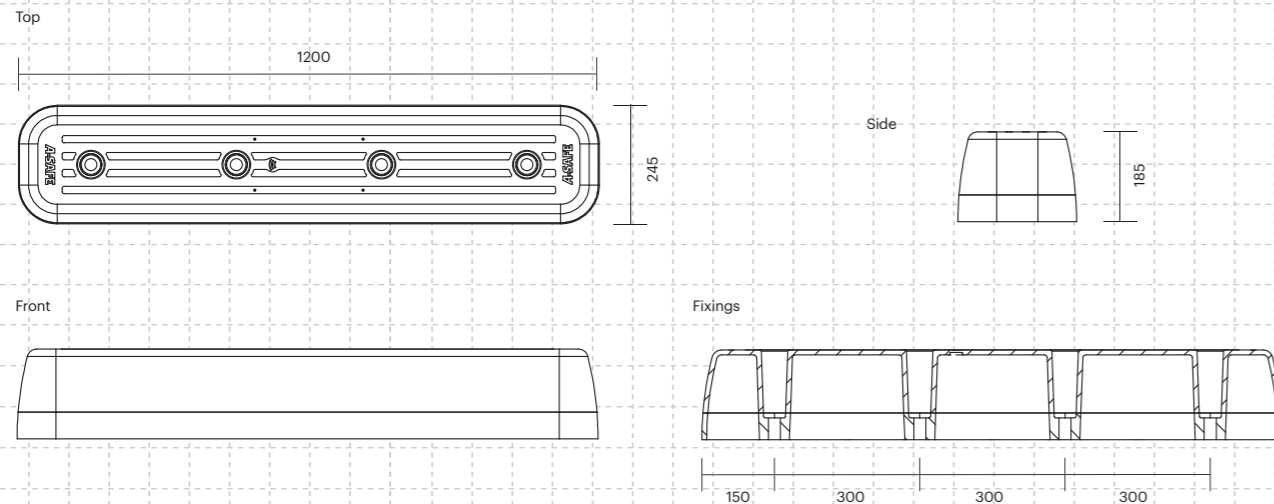
Material properties	MONOPLEX™
Temperature Range	5°C to 40°C
Ignition Temperature	>400 °C
Flash Point	350°C to 370°C
Toxicity	Not Hazardous
Chemical Resistance	Excellent - ISO/TR 10358
Weathering Stability (Grey Scale)	5/5*
Light Stability (Blue Wool Scale)	7/8**
Static Rating (Surface Resistivity)	10 ¹⁵ - 10 ¹⁶ Ω
Hygiene Seals	No

* Weathering scale 1 is very poor and 5 is excellent
** Light stability scale 1 is very poor and 8 is excellent

Product weights		
StepBumper 1200	18kg / 40lbs	15,800 Joules
StepBumper 900	14kg / 31lbs	15,800 Joules
StepBumper 600	9kg / 20lbs	10,400 Joules

Colours	
TOP LAYER	BOTTOM LAYER
Standard Black	Standard Yellow
RAL 9005*	RAL 1007*
PANTONE Black	PANTONE 7548*

Dimensions (mm)



A-SAFE

StepBumper



The StepBumper offers unprecedented heavy-duty low-level protection that prevents injuries and damage in vehicle charging areas, goods holding areas and pedestrian walkways. The dangers in these areas of the workplace can lead to pedestrian injuries, damaged infrastructure and costly downtime.

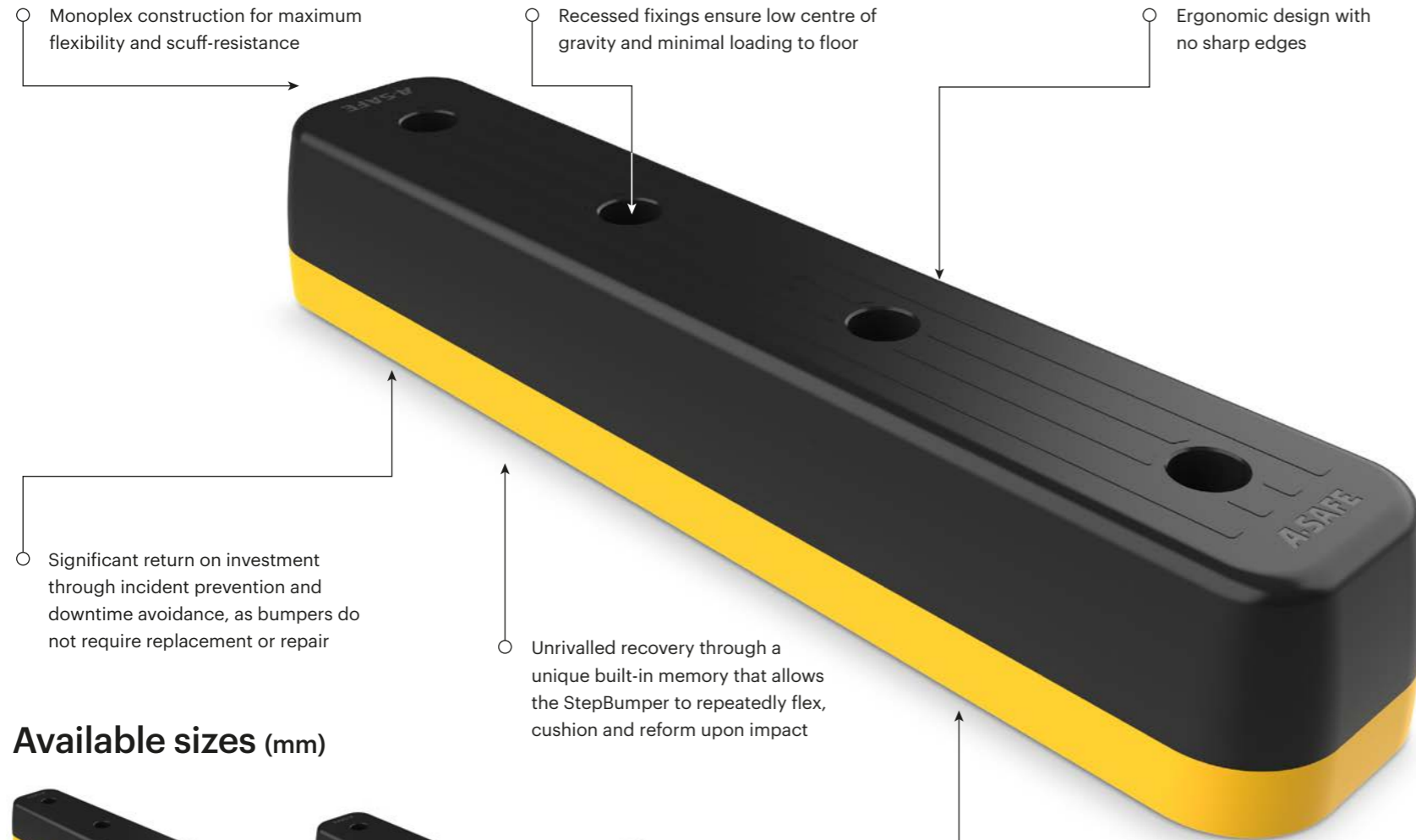


Tested to the global benchmark in barrier safety

bsi. PAS 13
Code of Practice for Workplace Safety Barriers

Engineered for performance

A-SAFE's state-of-the-art products are meticulously engineered to deliver the highest performance. Designed, developed, tested and manufactured in-house at our cutting-edge facility, each unique component is carefully crafted and purpose-built to play a vital role in the product's performance.



- Monoplex construction for maximum flexibility and scuff-resistance
- Recessed fixings ensure low centre of gravity and minimal loading to floor
- Ergonomic design with no sharp edges
- Significant return on investment through incident prevention and downtime avoidance, as bumpers do not require replacement or repair
- Unrivalled recovery through a unique built-in memory that allows the StepBumper to repeatedly flex, cushion and reform upon impact
- Hygienic, wipe clean and water resistant

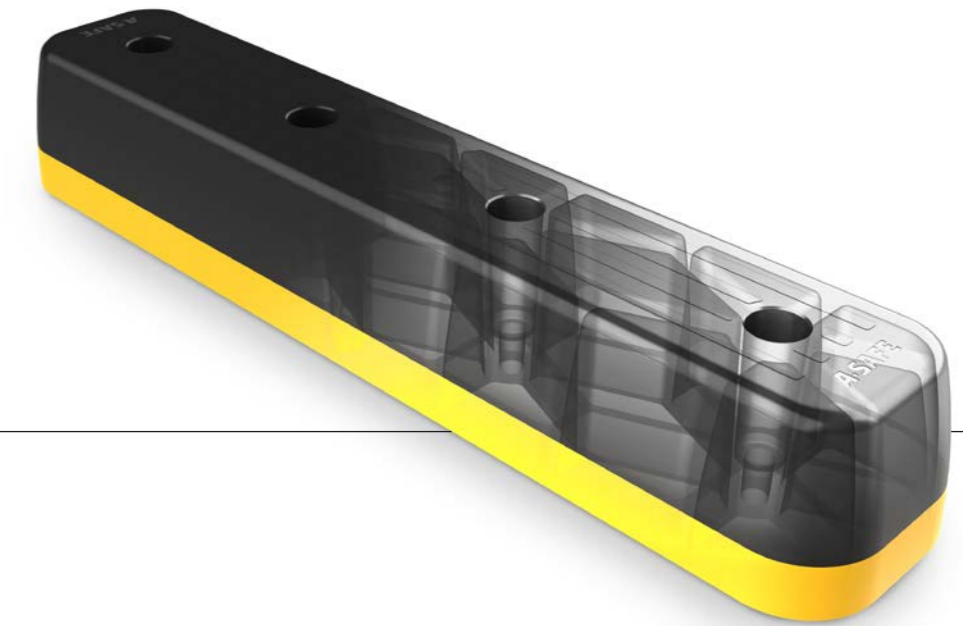
Available sizes (mm)



- **Rib structure**
Heavy duty vehicles operating within shared workspaces such as charging points require products which can withstand high impacts. The supporting internal rib structure provides strength throughout the product to ensure the StepBumper doesn't crumple under impact and can return to its original form.

MONOPLEX™ material

Monoplex is a new material innovation that is revolutionising impact protection in industrial workplaces worldwide. Precision-engineered and produced in the UK using state-of-the-art materials and manufacturing technology, Monoplex safety products offer unprecedented levels of versatility, durability, and performance across multiple impacts.



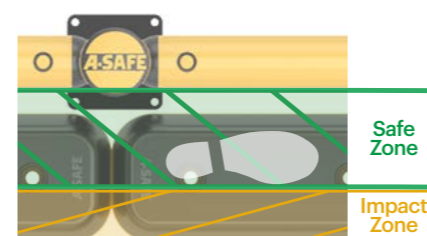
Twin layered

The twin layered Monoplex product offers a softer upper layer which dissipates energy whilst the lower harder layer provides rigidity around the fixing holes. This ensures the StepBumper remains strong under impact and distributes energy across the product, reducing the risk of damage and minimizes the risk of fixings pulling out of the ground.



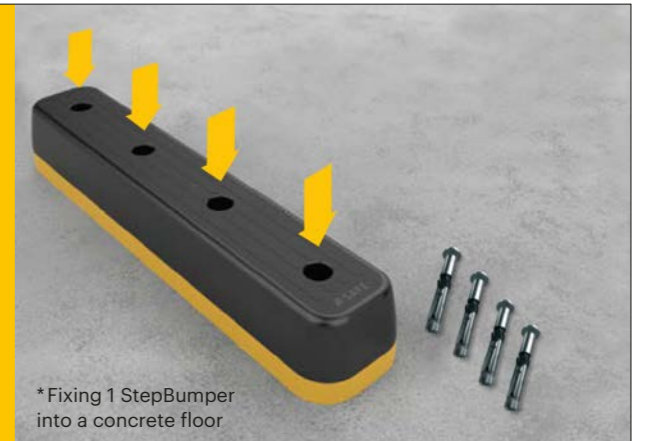
Safe Zone

This illustration shows a Safe Zone created by the rigidity of the StepBumper. In the eventuality that a vehicle continues to move after the driver has dismounted.



Quick and easy to install

The StepBumper is easy to install to install with a maximum of 4 x M16 – OD24mm Bolt Type Head fixings (1200mm version) per StepBumper. This means that the product can be installed or replaced quickly with a minimum amount of disruption on site.



* Fixing 1 StepBumper into a concrete floor